

**CONRAD LUTZ & Associates, Inc.**  
1850 Craigshire Road / Suite 105B  
St. Louis, Missouri 63146  
314-576-7967 f-576-5352  
plutz@conrad-lutz.com

**BRADY ENGINEERING, L.L.C.**  
4695 DUBOIS CREEK LN, WASHINGTON, MO 63090  
Tel: 636-390-4900 Fax: 636-390-4145 Email bradyeng@yhti.net

**BRADY ENGINEERING, L.L.C.**  
4695 DUBOIS CREEK LN. WASHINGTON, MO 63090  
Tel: 636-390-4900 Fax: 636-390-4145 Email bradyeng@yhti.net

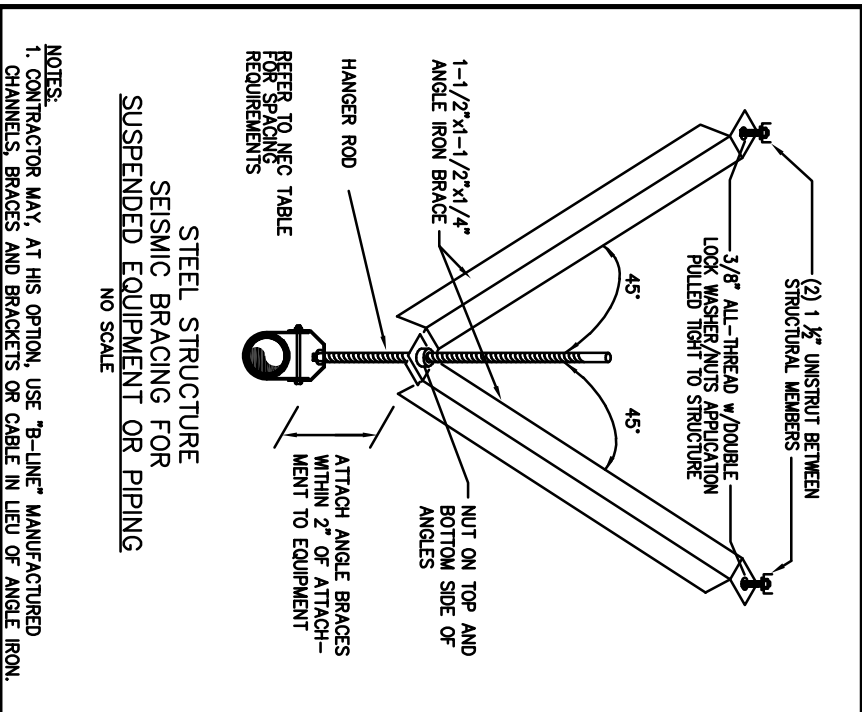
*Central County Emergency 911  
Server Room HVAC Modifications  
22 Weis Ave., Ellisville, MO. 63011*

SHEET INFORMATION	
SHEET TITLE:	SEE PLAN
DRWG. NO.:	Pub 10
APPRO:	
PLAN DATE:	02/19/10
SCALE:	SEE PLAN
FRONT NO.	CLA #1006
SHEET NO.	

[illegible]

1. All work shall be done in strict accordance with the latest edition of the National Electrical Code and all regulations, codes and ordinances which may be applicable.
2. E.C. shall refer to existing conditions, architectural, mechanical and structural drawings, specifications and contract documents to avoid any and all conflicts. Failure to do so will not exonerate this contractor's responsibilities or allow extra monies.
3. All wire to be copper with THHN or THHN insulation. Type XE, BX, NM or NMU cables will not be permitted. All conductors shall be sized in accordance with the applicable ampacity tables as permitted by local authority. All conductors for 60 to 100 amp service shall be sized in accordance with the applicable ampacity tables as permitted by local codes. Wiring methods are to comply with NEC Article 300.

- [illegible]

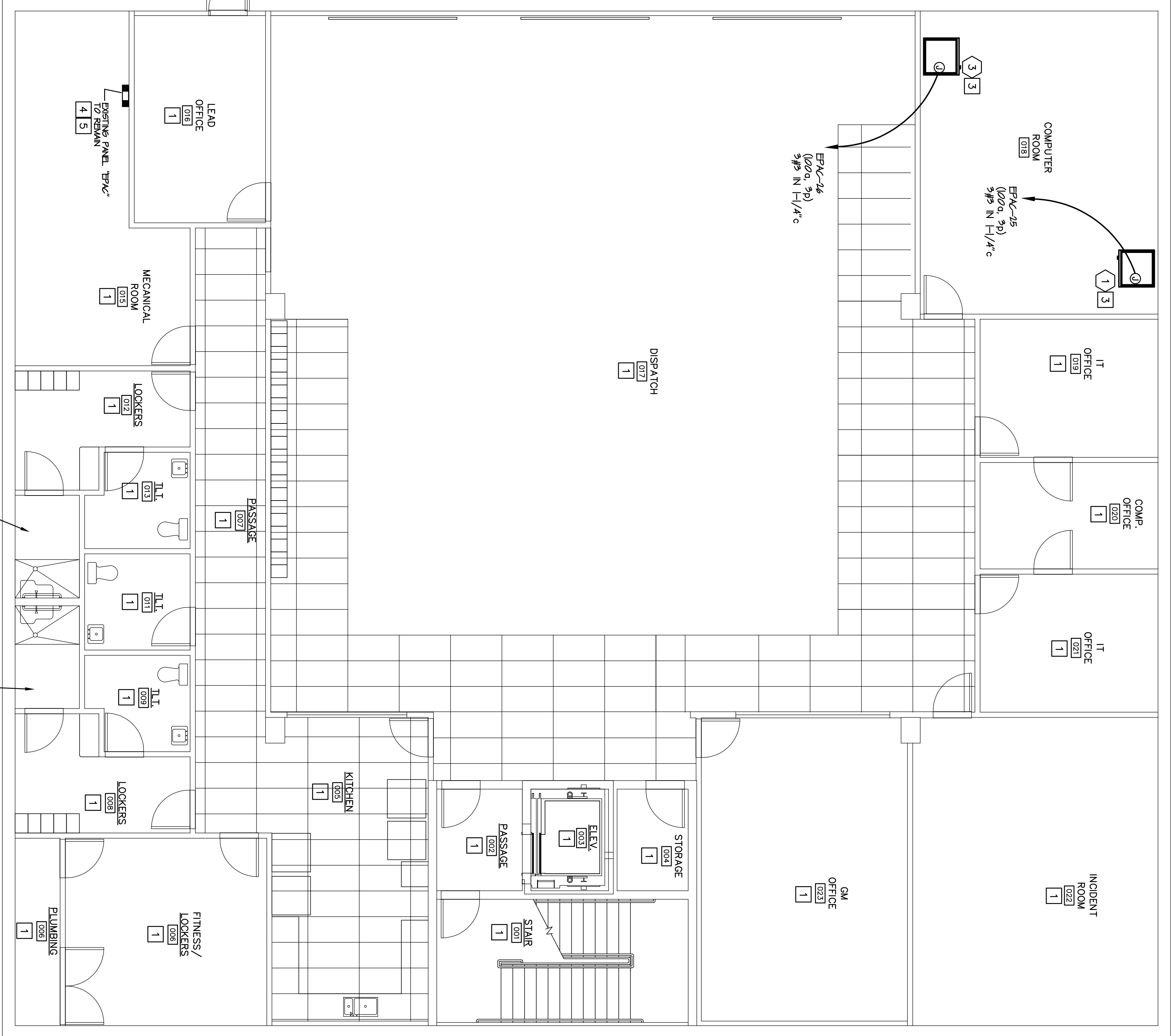
[illegible]

**GENERAL NOTE:**  
ALL CONDUITS ARE TO HAVE INDEPENDENT GREEN GROUND WIRE INSTALLED ALONG WITH FEEDERS INDICATED.  
SIZE PER THE NATIONAL ELECTRIC CODE.

WIRE INSTALLED ALONG WITH FEEDERS INDICATED.

OTHERWISE NOTED.

- 1 NO ELECTRICAL WORK TO BE DONE IN THIS AREA UNLESS OTHERWISE LISTED
- 2 E.E. TO RE-TEST ENGINE FEEDERS AND CABLED VIA NEW W/ JUNCTION BOX AND REED IT PRE-INSTALLED SINGLE FIELD W/ REPT. LOCATION AND ADJUST AS REQUIRED.
- 3 E.E. TO ENHANCE AND REPAIR FEEDERS AND CABLED IN/OUTS FOR NEW EQUIPMENT ROUTE TO PANEL, ABOVE ACCESSIBLE CABLES, ALL WORK TO BE COORDINATED WITH MAINTENANCE PERSONNEL FOR MINIMAL INTERFERENCE.
- 4 EMERGENCY PANEL "BAY" IS ENGINE TO REMAIN.  
DISCONNECTED FROM 480/200  
120/200 V/A (998.9)  
LOAD BEING REMOVED 34000 V/A  
480/60 V/A  
NEW TOTAL LOAD: 141200 V/A (3344.6)  
120/200 V/A 480/200 V/A  
THIS IS CALCULATED LOAD W/O DIVERSITY
- 5 E.E. TO REPLACE ENGINE 300.0% BECKHAMS WITH NEW 1200.0% BECKHAMS FOR 300.0% 25 AND 24 FELD VERY MAINTENANCE FOR CABLED.
- 6 E.E. TO REPAIR ALL CABLED, COMPONENTS CONCRETE LEAVING READY FOR OPERATION, COORDINATE ELECTRICAL DRAWINGS, SCHEDULES AND DETAILS PERFORM DEBRIE AND INSTALLATION, CABLE WITH THINDED PER WIRING BY E.E. FOR COMMUNICATION ALONG WITH CHANGED CONNECTIONS FOR WIRING REQUIREMENTS.



LOWER LEVEL ELECTRICAL PLAN  
SCALE: 3/16"=1'-0"

[illegible]